



U-COM 16

User manual



SUMMARY

1. ABOUT 4

- 1.1 Product details.....4
- 1.2 Package contents4

2. HOW TO INSTALL 5

- 2.1 Install main unit5

3. GETTING STARTED 6

4. PAIRING WITH OTHER BLUETOOTH® DEVICES 6

- 4.1 Pairing with Mobile phone / TFT systems6
- 4.2 Second mobile phone pairing7
- 4.3 GPS Pairing7
- 4.4 Advanced Selective Pairing: Hands-Free or A2DP Stereo8
 - 4.4.1 Phone Selective Pairing - Hands-Free Profile8
 - 4.4.2 Media Selective Pairing - A2DP Profile8

5. MOBILE PHONE USAGE 8

- 5.1 Making and Answering Calls8
- 5.2 Siri and Google Assistant.....8
- 5.3 Speed Dialing8
 - 5.3.1 Using preset speed dial numbers.....8

6. MUSIC 9

- 6.1 Playing Music with Bluetooth® Devices9
- 6.2 Music sharing9
 - 6.2.1 Bluetooth® Intercom Music Sharing9
 - 6.2.2 Mesh Intercom Music Sharing.....9

7. MESH INTERCOM 10

- 7.1 What is Mesh Intercom? 10
- 7.2 OPEN MESH mode 10
- 7.3 Start mesh intercom in OPEN MESH mode..... 11
 - 7.3.1 OPEN MESH channel selection..... 11
- 7.4 Group Mesh (only available if “Advanced Features” is activated on the APP) 11
 - 7.4.1 Creating a group “Group Mesh” 11
- 7.5 Reset Mesh (only available if “Advanced Features” is activated on the APP)12
- 7.6 Toggle Open Mesh / Group Mesh modes12
- 7.7 Enable / disable microphone12

8. BLUETOOTH® INTERCOM 13

- 8.1 Intercom pairing13
- 8.2 Two-way Intercom Conversation14
- 8.3 Multi-user Intercom Conference.....14
 - 8.3.1 Starting a Three-way Intercom Conference.....14
 - 8.3.2 Starting a four-way intercom conference15
 - 8.3.3 Stop Multi-user Intercom15
- 8.4 Three-Way Conference Phone Call with Intercom Users15
- 8.5 Group Intercom16
- 8.6 Mesh Intercom Conference with Bluetooth® Intercom Participant16
- 8.7 Old Interphone Series.....17
- 8.8 Anycom.....17
- 8.9 Mesh Intercom with Anycom17

9. FM RADIO **18**

9.1 FM Radio features	18
9.2. Radio Stations memory	18
9.3 Region Selection	18
9.4 Storing temporary stations (with "Advanced Features" activated by APP or Device Manager)	18

10. VOICE COMMANDS **19**

11. FUNCTION PRIORITY AND FIRMWARE UPGRADES **20**

11.1 Function Priority	20
11.2 Firmware Upgrades	20

12. CONFIGURATION SETTING **20**

12.1 Headset Configuration Setting	20
12.1.1 Delete all pairings	20
12.2 Device settings	21
12.2.1 Speed dial	21
12.2.2 Channel Setting (Default: channel 1).....	21
12.2.3 Unit Language	21
12.2.4 Audio Equalizer (Default: Off).....	21
12.2.5 VOX Phone (Default: Enable)	21
12.2.6 VOX Intercom (Default: Disable).....	21
12.2.7 VOX Sensitivity (Default: 3).....	21
12.2.8 Bluetooth® Intercom Audio Multitasking (Default: Disabled).....	21
12.2.9 Intercom-Audio Overlay Sensitivity (Default: 3).....	22
12.2.10 Audio Overlay Volume Management (Default: Disable)	22
12.2.11 HD Intercom (Default: Enable).....	22
12.2.12 HD Voice (Default: Enable)	22

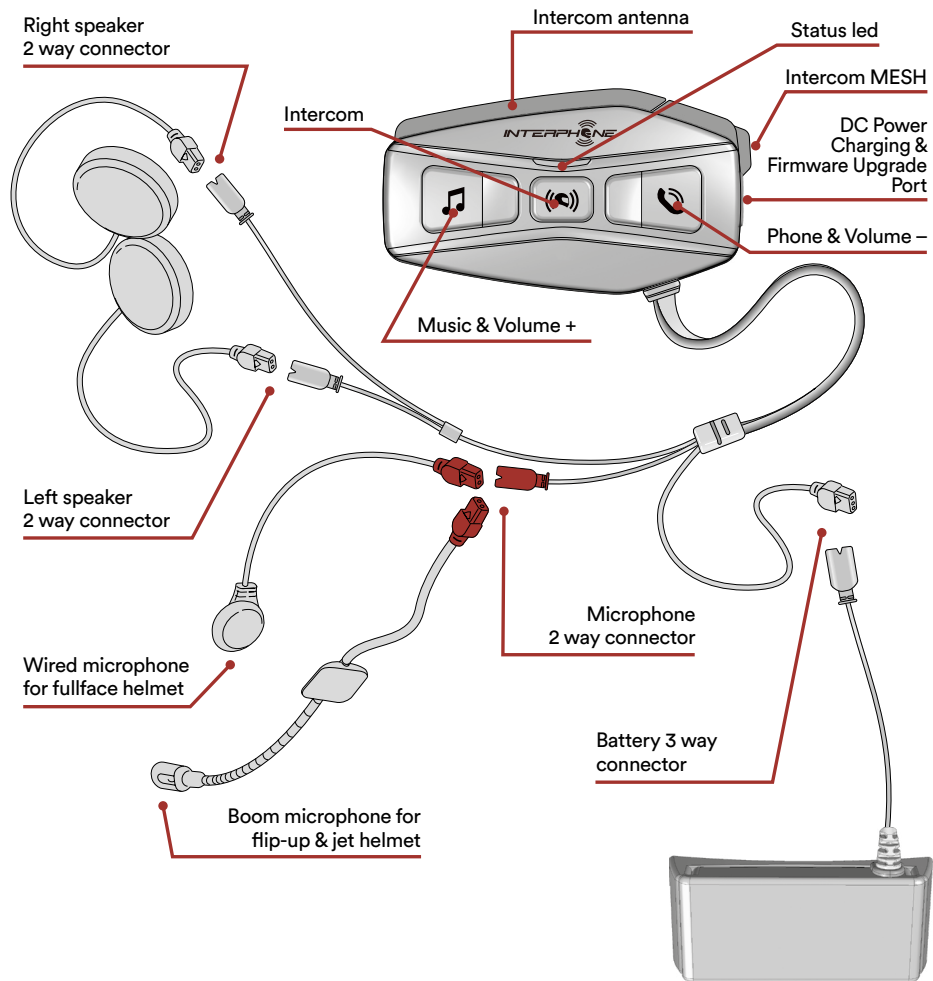
12.2.13 Smart Volume Control (Default: Disable)	22
12.2.14 Sidetone (Default: Disable)	22
12.2.15 Voice Prompt (Default: Enable).....	22
12.2.16 RDS AF Setting (Default: Disable)	22
12.2.17 FM Station Guide (Default: Enable)	22
12.2.18 Advanced Noise Control™ (Default: Enable)	22

13. TROUBLESHOOTING **23**

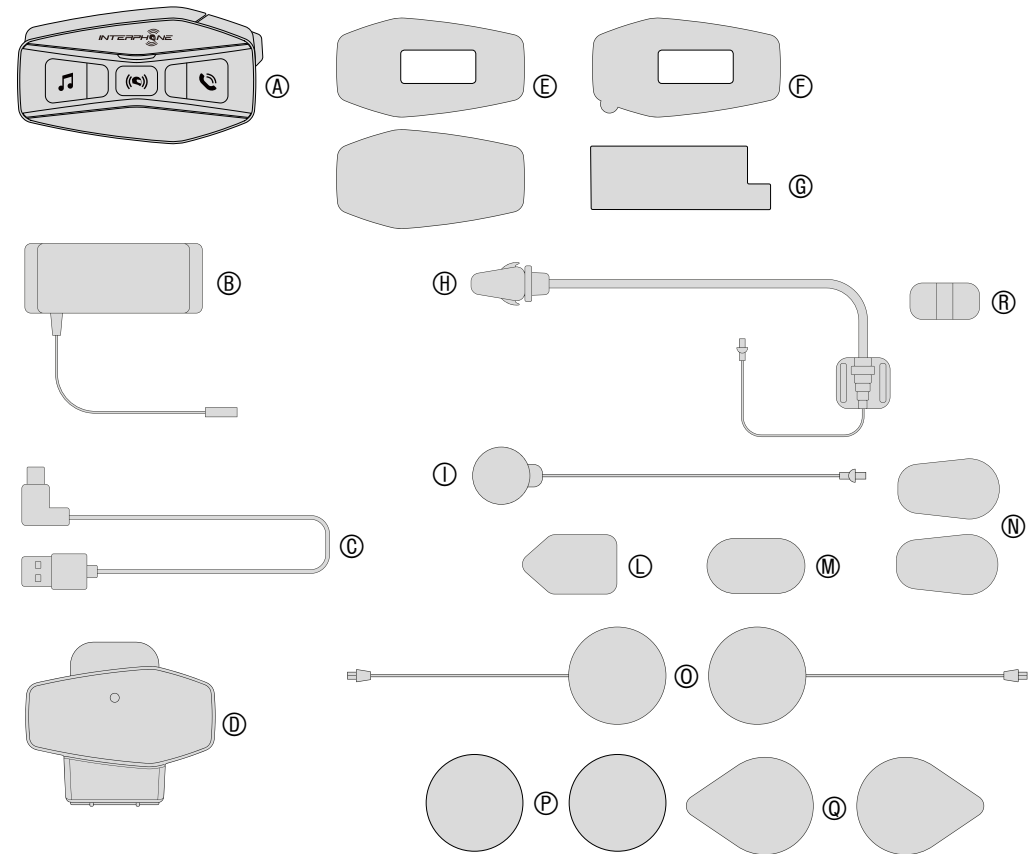
13.1 Fault reset	23
13.2 Factory reset	23

1. ABOUT

1.1 Product details



1.2 Package contents

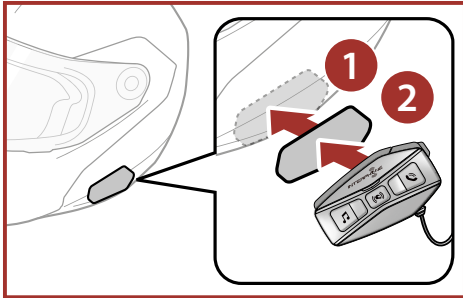


- A) Main unit
- B) Battery with bracket
- C) Data/charge cable usb type C
- D) Main unit bracket
- E) Main unit Velcro
- F) Main unit adhesive
- G) Battery bracket adhesive
- H) Boom microphone
- I) Wired microphone
- L) Boom microphone Velcro
- M) Wired microphone Velcro a
- N) Boom microphone foam cover
- O) Speakers
- P) Spacers for speakers
- Q) Speakers Velcro
- R) Boom microphone holder

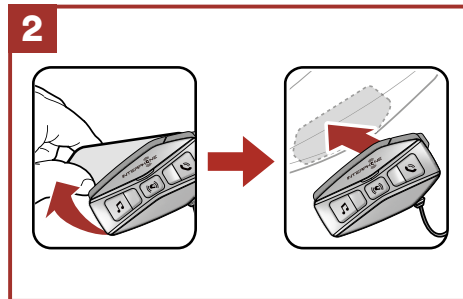
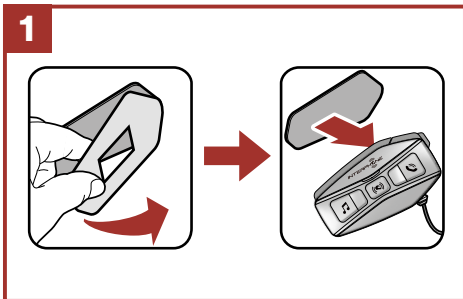
2. HOW TO INSTALL

2.1 Install main unit

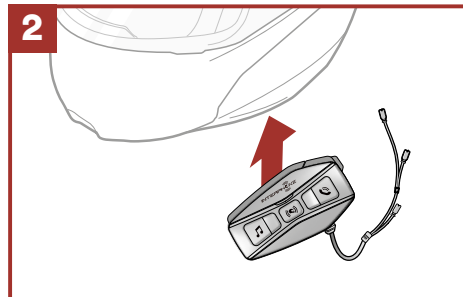
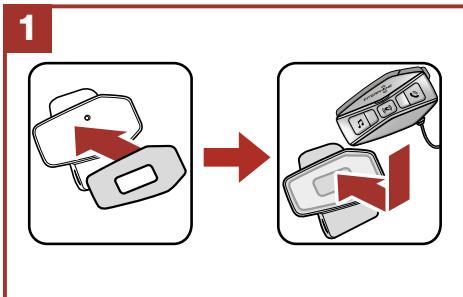
Using the hook and loop fasteners for main unit



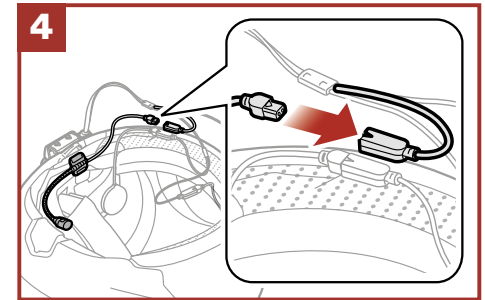
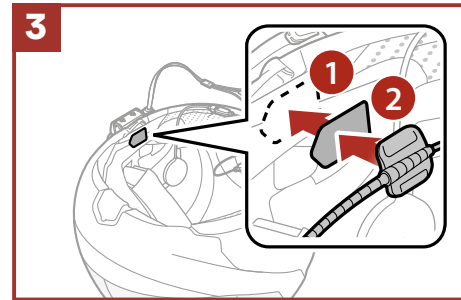
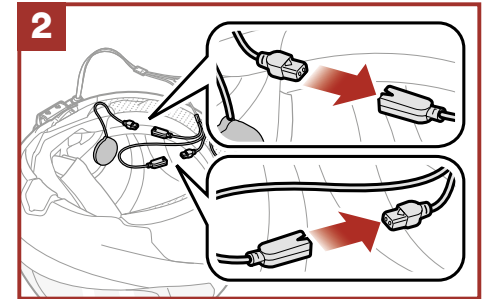
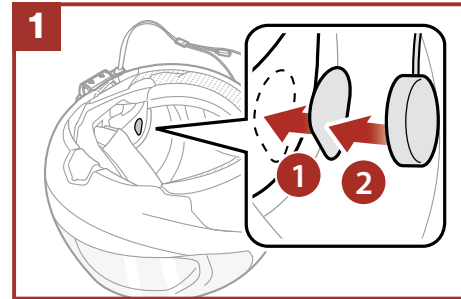
Using the double sided adhesive tapes for main unit



Using the clamp for main unit

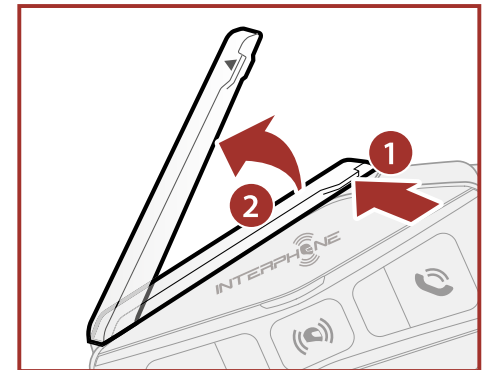


Installing the speakers and the microphone

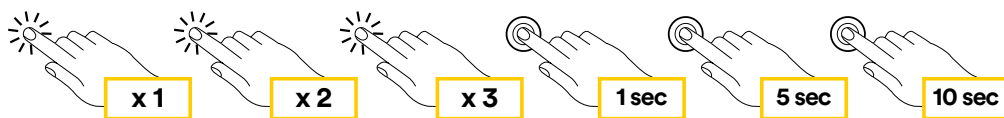


Mesh Intercom Antenna

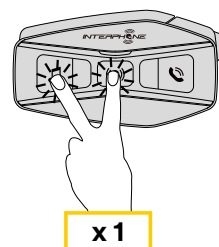
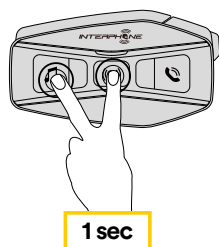
Pull the mesh intercom antenna inwards slightly to unfold it.



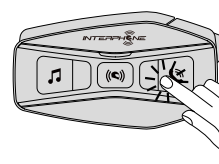
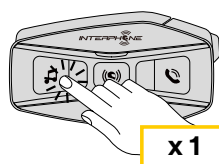
3. GETTING STARTED



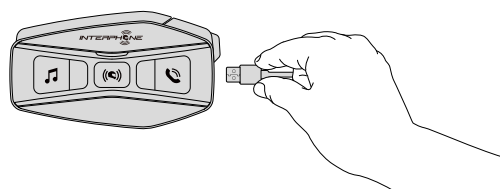
Power on



Volume increase



Charging



Note:

- U-COM 16 use a fast charging technology, via USB-C connector. Charging for 30 minutes will give 6h of intercom talking in Bluetooth® mode or 3,5h in Mesh mode.
- Any USB charger with FCC, CE, IC or any local approval can be used.
- U-COM 16 is compatible only with USB device with 5V DC input.

4. PAIRING WITH OTHER BLUETOOTH® DEVICES

When using the headset with other Bluetooth® devices for the first time, they will need to be “paired.” This enables them to recognize and communicate with one another whenever they are within range.

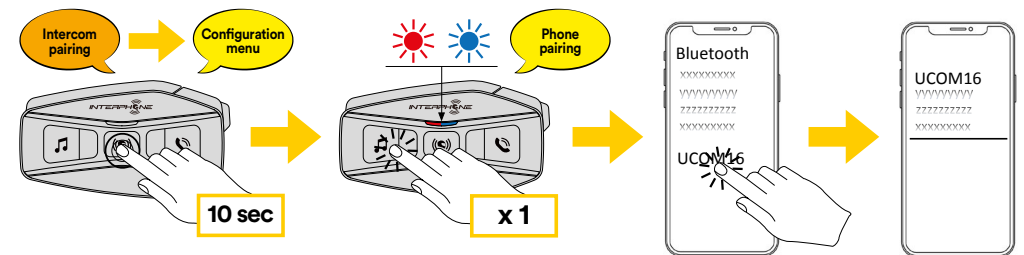
U-COM 16 can be paired to max 3 U-COM units.

U-COM 16 can be paired to Bluetooth® devices such as mobile phones, GPS Satnav and TFT motorcycle multimedia systems.

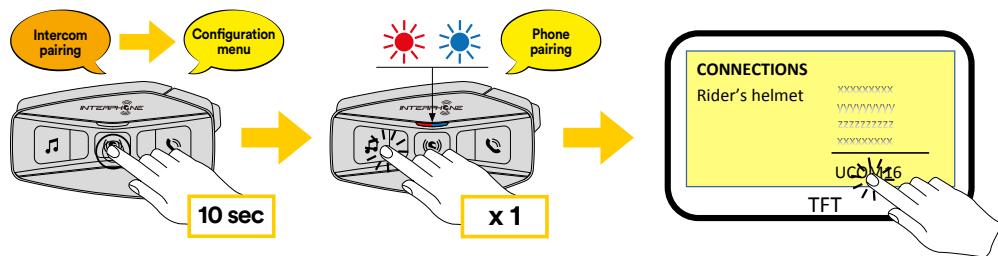
4.1 Pairing with Mobile phone / TFT systems

1. Switch on Bluetooth® service on your phone (check device manual for more details).
2. With U-COM 16 on, press and hold central button for 10 seconds, to enter settings menu. Don't release the button until the led light is blue.
3. Press once MUSIC button to start phone pairing mode.
4. On your phone search for new Bluetooth® devices.
5. In few moments the phone will list “U-COM 16 vx.x” among available devices to pair. Select this item.
6. If prompted for a PIN or code, enter 0000 (four times zero).
7. U-COM Voice guide will confirm the successful pairing.
8. If your smartphone asks for additional authorization please confirm.

Main phone pairing (to be done with unit on)



Multimedia TFT system of motorcycle must be paired with “PHONE PAIRING”:



Note: There is an alternative way, to pair only the first phone (main telephone). With the control unit off, press and hold at the same time the MUSIC key together with the CENTRAL key, until the red / blue LED flashes.

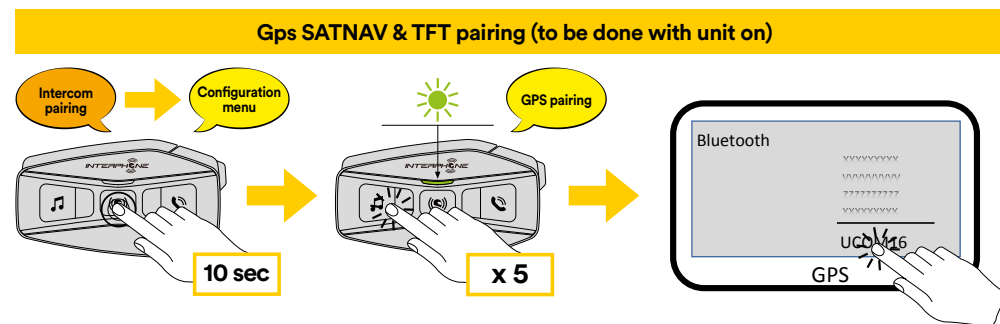
The primary phone will have priority over the second phone, in case of simultaneous call reception on both phones.

4.2 Second mobile phone pairing

1. Switch on Bluetooth® service on your phone (check device manual for more details).
2. With U-COM 16 on, press and hold central button for 10 seconds, to enter settings menu. Don't release the button until the led light is blue.
3. Press the MUSIC button twice to activate Second mobile phone pairing mode.
4. Start the search for new Bluetooth® devices on the mobile phone.
5. In few moments the phone will list “U-COM 16 vx.x” among available devices to pair. Select this item.
6. If prompted for a PIN or code, enter 0000 (four times zero).
7. UCOM Voice guide will confirm the successful pairing.
8. If your smartphone asks for additional authorization please confirm.

4.3 GPS Pairing

1. Switch on Bluetooth® service on your GPS (check device manual for more details).
2. With U-COM 16 on, press and hold central button for 10 seconds, to enter settings menu. Don't release the button until the led light is blue.
3. Press the MUSIC button 5 times to activate GPS pairing mode.
4. Start the search for new Bluetooth® devices on the GPS.
5. In few moments the device will list “U-COM 16 vx.x” among available devices to pair. Select this item.
6. If prompted for a PIN or code, enter 0000 (four times zero).
7. UCOM Voice guide will confirm the successful pairing.
8. If your device asks for additional authorization please confirm.



4.4 Advanced Selective Pairing: Hands-Free or A2DP Stereo

Phone Pairing allows the headset to establish two Bluetooth® profiles: Hands-Free or A2DP Stereo. Advanced Selective Pairing allows the headset to separate the profiles to enable connection with two devices.

4.4.1 Phone Selective Pairing - Hands-Free Profile

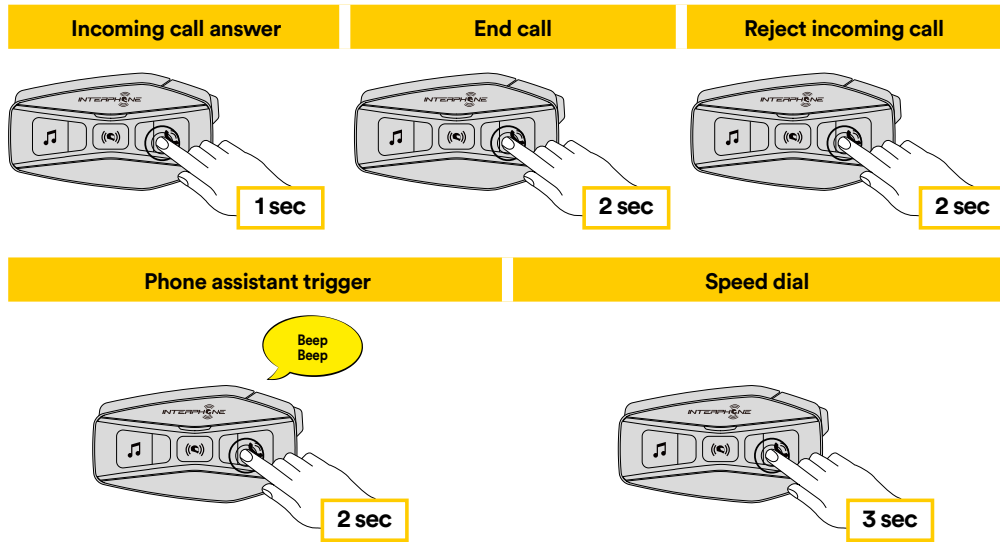
Execute Phone Selective Pairing in the Configuration Menu.

4.4.2 Media Selective Pairing - A2DP Profile

Execute Media Selective Pairing in the Configuration Menu.

5. MOBILE PHONE USAGE

5.1 Making and Answering Calls



Note: If you have a GPS device connected, you will not hear its voice navigations during a phone call.

5.2 Siri and Google Assistant

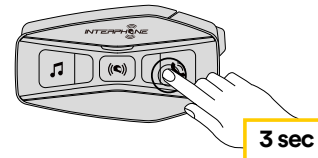
U-COM 16 supports the Siri and Google Assistant access directly. You can activate the Siri or Google Assistant using the voice through the headset's microphone, a wake word will be used. This is a word or groups of words such as "Hey Siri" or "Hey Google".

5.3 Speed Dialing

It is possible to store up to 3 telephone numbers (if "advanced mode" is active) to be used as speed dials. You can set the speed dial numbers via UNITE APP or INTERPHONE Device Manager.

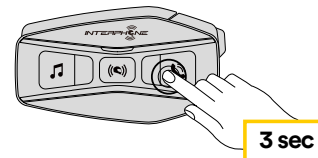
5.3.1 Using preset speed dial numbers

How to activate speed dial (with ADVANCED FEATURES off)



How to activate speed dial (with ADVANCED FEATURES on)

1. Enter into the Speed Dial menu.



2. Navigate between the Speed Dial Preset with MUSIC and PHONE buttons, as indicated in picture here below. Select the wanted feature with CENTRAL button.

Select one function	Confirm selected function					
<table border="1"> <tr><td>Last number redial</td></tr> <tr><td>Speed dial #1</td></tr> <tr><td>Speed dial #2</td></tr> <tr><td>Speed dial #3</td></tr> <tr><td>Cancel (exit from menu)</td></tr> </table>	Last number redial	Speed dial #1	Speed dial #2	Speed dial #3	Cancel (exit from menu)	
Last number redial						
Speed dial #1						
Speed dial #2						
Speed dial #3						
Cancel (exit from menu)						

6. MUSIC

6.1 Playing Music with Bluetooth® Devices

Interphone U-COM 16 can play music from Bluetooth® devices (smartphones, MP3 players, Motorcycle TFTs etc ...) equipped with the A2DP profile. To play music you need to pair these devices to INTERPHONE U-COM 16.

Music play	Music pause	Next track	Previous track

6.2 Music sharing

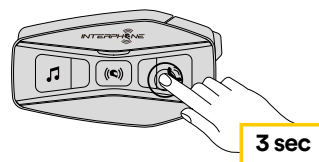
You can start sharing the music received from your phone with another U-COM control unit, during a two-way intercom conversation.

Both control units can control the playback of music, eg example go to the next track or the previous track.

Only with MESH intercom conversation, it is possible to listen shared music in the background.

6.2.1 Bluetooth® Intercom Music Sharing

To start / stop sharing music, activate first the intercom conversation, then press the PHONE button for 3 seconds.

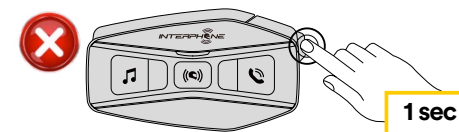


6.2.2 Mesh Intercom Music Sharing

To start / stop sharing music, activate the intercom conversation, then press the PHONE button for 3 seconds.

On the second unit, a voice prompt will ask to accept music sharing.

Press the MESH button once to accept, hold for 1 second the MESH button to reject.



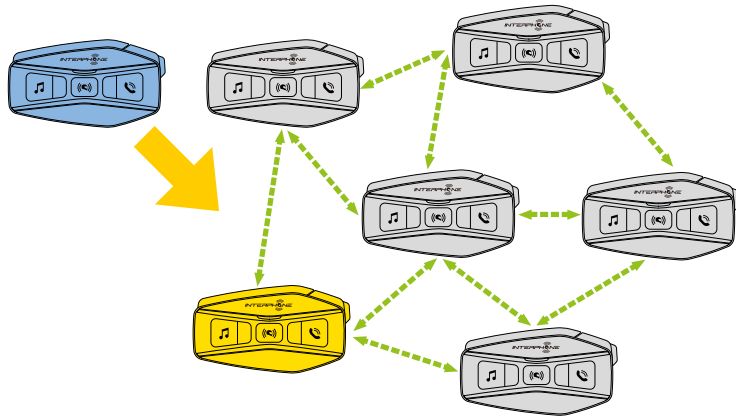
7. MESH INTERCOM

7.1 What is Mesh Intercom?

U-COM 16 is equipped with MESH 2.0 technology.

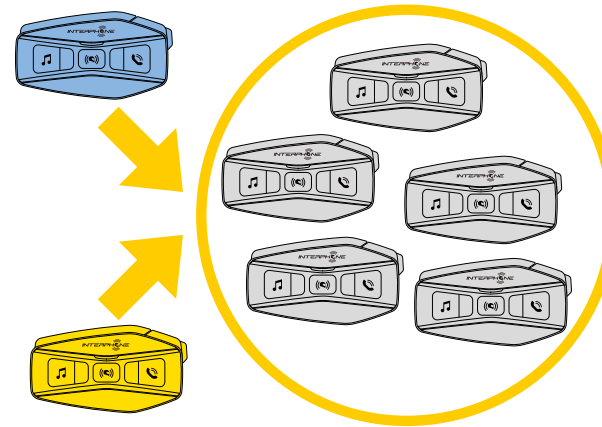
MESH 2.0 is the latest evolution of MESH intercom communication, which allows you to speak freely without having to do any pairing and without any position constraints within the group.

Within the same Open Mesh™ channel or the same private group in Group Mesh™, users can talk and enjoy at the same time a conversation of excellent quality.

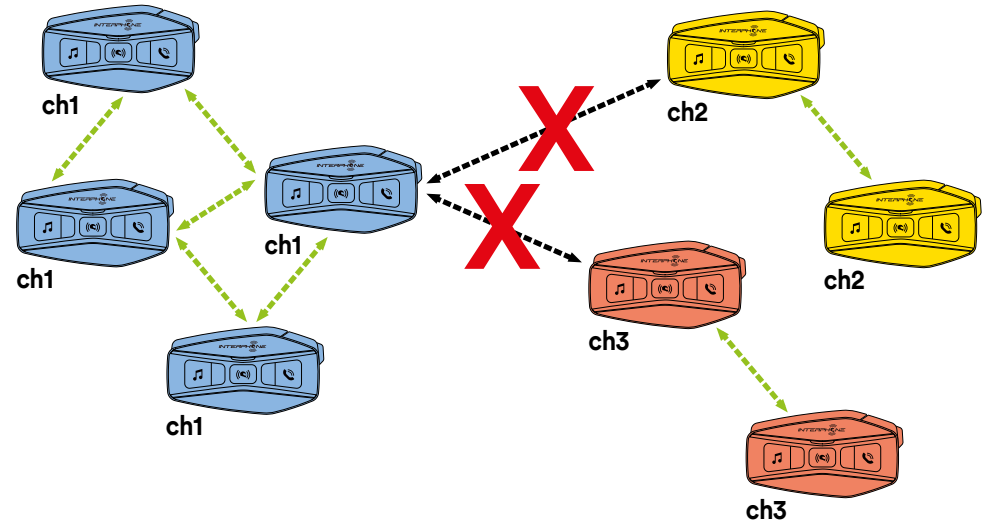


7.2 OPEN MESH mode

The OPEN MESH mode allows free communication, in public mode, up to a maximum of 24 connected users. To talk, devices can only be within range, with the MESH mode active. OPEN MESH mode is active as a factory default mode.

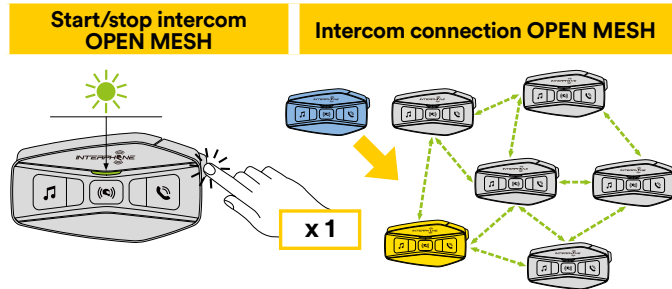


You can choose the MESH channel (from 1 to 9) to be used for communication.



7.3 Start mesh intercom in OPEN MESH mode

With U-COM 16 on, press the MESH button on each control unit, to activate the communication mode. Each control unit automatically will connect to other units simply by speaking into the microphone. Adjust the volume of mesh communication according to your needs.



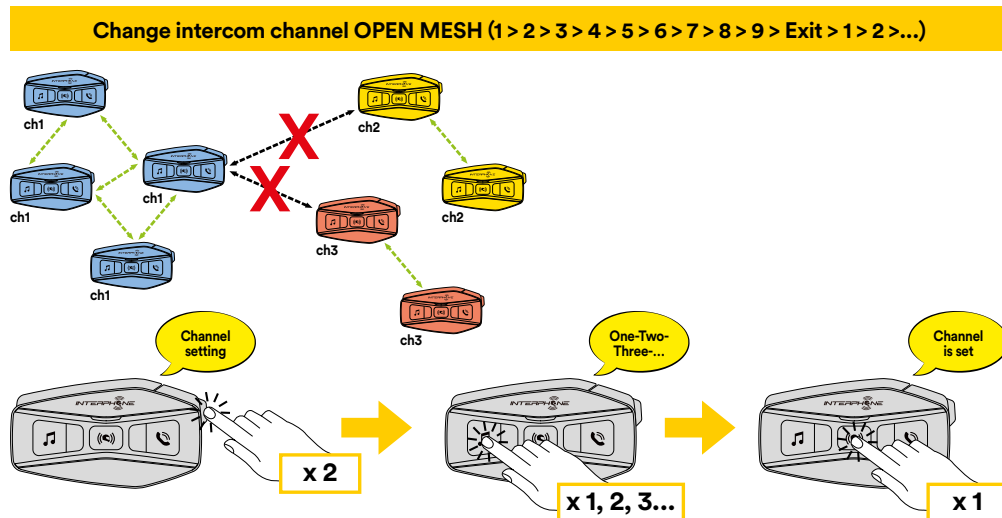
7.3.1 OPEN MESH channel selection

By activating OPEN MESH, the default factory setting is Channel1.

Only the control units working on the same channel will be able to connect together.

You can choose a different channel to manage different conversation groups.

To change channel, press the MESH button twice, change the channel by pressing the MUSIC button (each press advances one channel), confirm the channel selected by pressing the INTERCOM (central) button.

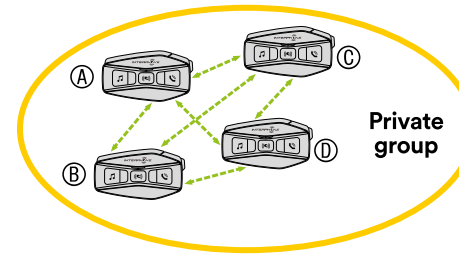


7.4 Group Mesh (only available if “Advanced Features” is activated on the APP)

Group Mesh is an intercom function, which allows users to join a closed / private Mesh group conversation (as opposed to OPEN MESH which is open / public), limited to members of that group only.

Users belonging to the group can freely communicate with each other when they are in the same Group Mesh private group, taking advantage of all benefits of MESH 2.0 technology.

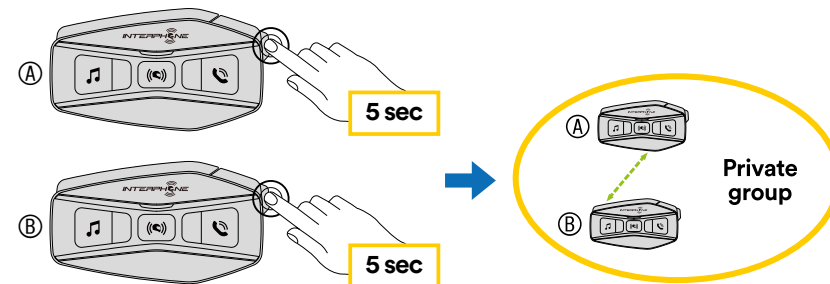
For a private intercom conversation using Group Mesh, first step is to create the group by users. When users create a private group in Group Mesh, the intercom switches automatically from Open Mesh a Group Mesh mode.



7.4.1 Creating a group “Group Mesh”

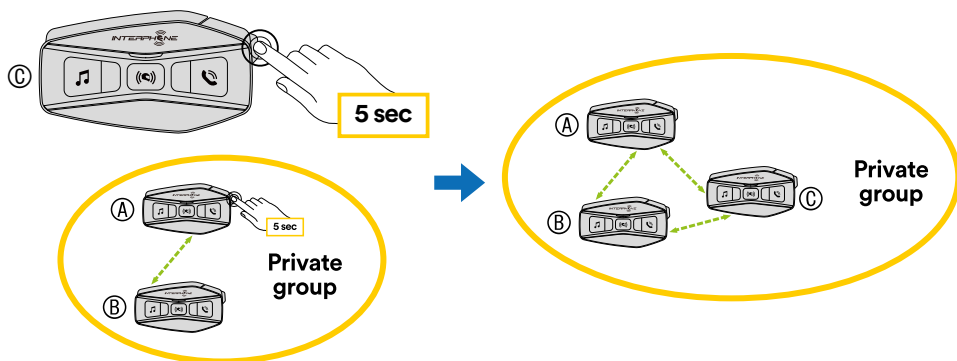
Creating a Group Mesh requires two or more “Open Mesh” users.

1. Activate the GROUP MESH function on the control units by pressing the MESH key on both control units for 5 seconds.



Units will complete the group creation and switch automatically from Open Mesh to Group Mesh mode.

- One of the members of an existing Group Mesh, by pressing 5 seconds the MESH button, can allow new members to join to the existing Group Mesh.

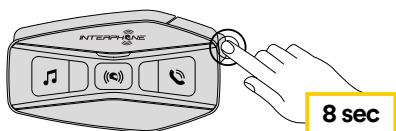


Units will complete the new group, adding the new member. The new member switches automatically from Open Mesh to Group Mesh and a voice prompt will confirm it.

- Repeat the operation of point 2. for each control unit to be added to private group.

7.5 Reset Mesh (only available if “Advanced Features” is activated on the APP)

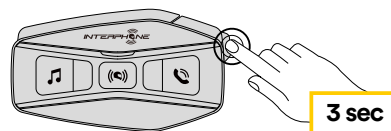
If a Mesh reset command is activated on a device, it returns automatically to Open Mesh mode (default channel 1). To start MESH reset, press the MESH button for 8 seconds .



7.6 Toggle Open Mesh / Group Mesh modes

Users can toggle between Open Mesh and Group Mesh and vice versa without reset the Mesh. This allows users to retain their private Group Mesh connection information while they are in Open Mesh.

To switch from Open Mesh to Group Mesh and vice versa, press the MESH button for 3 seconds.

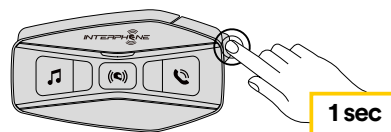


Note: If you have never joined Group Mesh before, you cannot switch between Open Mesh to Group Mesh and vice versa. The voice prompt is output “No groups available”.

7.7 Enable / disable microphone

Users can mute the microphone during a mesh intercom conversation. The same command is used to reactivate the microphone.

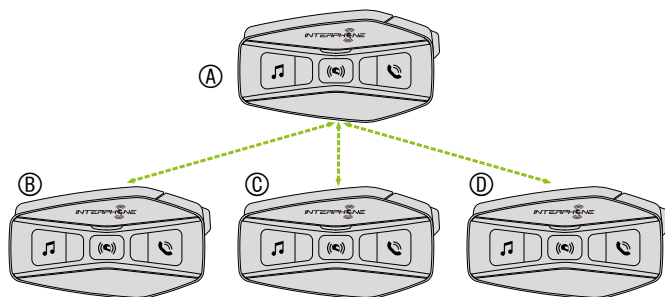
Press the MESH button for 1 second.



8. BLUETOOTH® INTERCOM

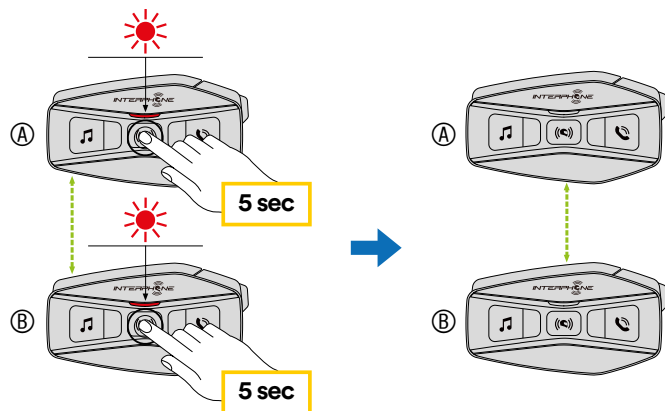
8.1 Intercom pairing

U-COM 16 can be paired with up to 3 other UCOM units (or Sena units), as shown in the following picture.



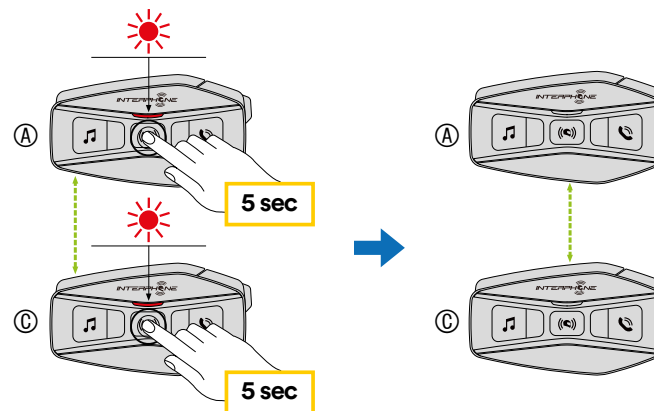
The pairing is only necessary the first time, then the control units will automatically recognize each other.

1. Press and hold the center button (intercom) on both units A and B for 5 seconds, until you hear the voice prompt “intercom pairing”. The light flashing red indicates the device is now visible.

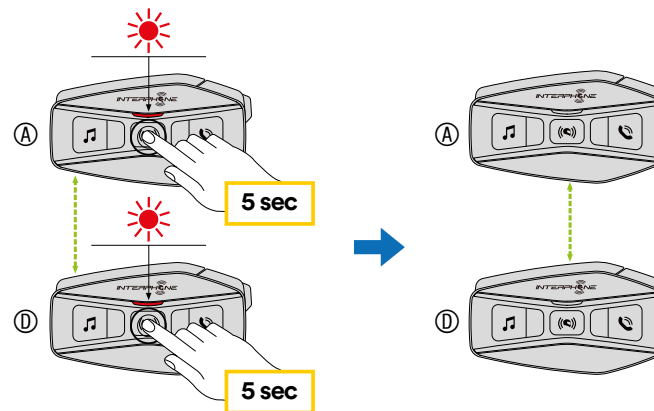


After few seconds the units will be paired and they will start the intercom communication. The light on both units will flash blue twice.

2. Repeat the previous step again, pressing the center button (intercom) on the two units A and C for 5 seconds until you hear the voice prompt “Intercom pairing”.



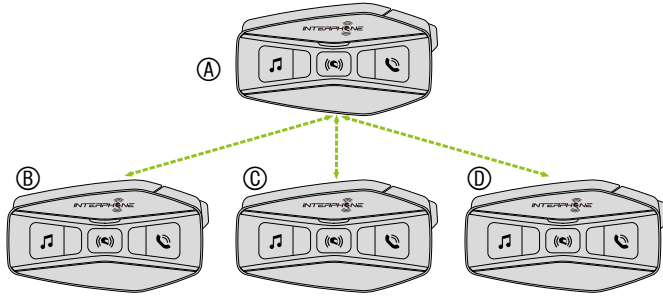
3. Repeat the procedure again, pressing the centre button (intercom) of the two units A and D for 5 seconds until you hear the voice prompt “Intercom pairing”.



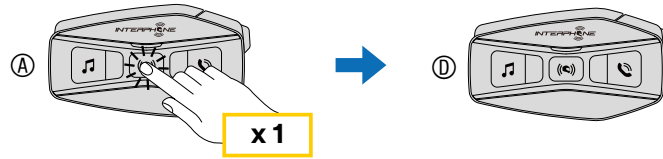
8.2 Two-way Intercom Conversation

After pairing the control units, communication can be started, by pressing the INTERCOM button (center button), according to the diagram below.

1. Press once to connect the control unit D.

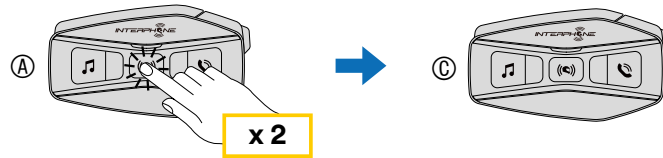


Start/stop intercom connection with unit "D"



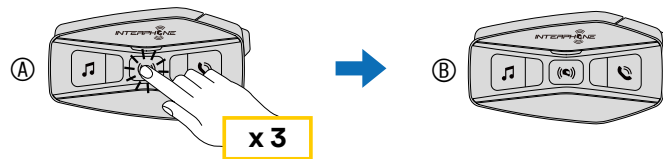
2. Press twice to connect the control unit C.

Start/stop intercom connection with unit "C"



3. Press three times to connect the control unit B.

Start/stop intercom connection with unit "B"



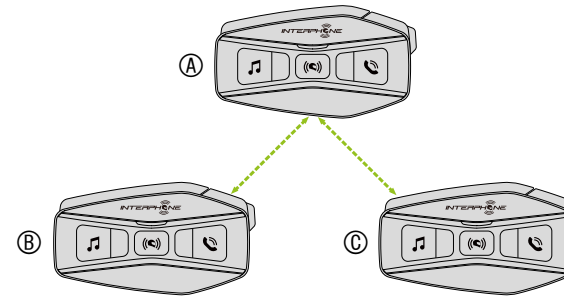
8.3 Multi-user Intercom Conference

Conference conversations can be activated with up to three other units at the same time.

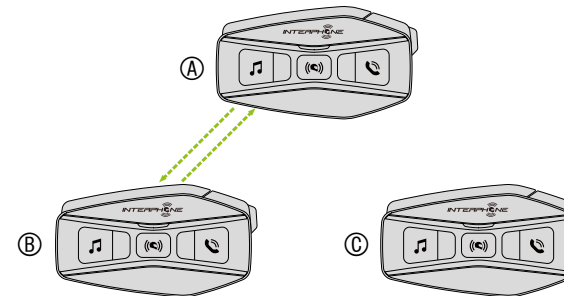
During the three-way or four-way intercom conversation, any mobile phone is temporary disconnected. However, as soon as the conversation ends, the connection with the mobile phone is automatically re-established.

8.3.1 Starting a Three-way Intercom Conference

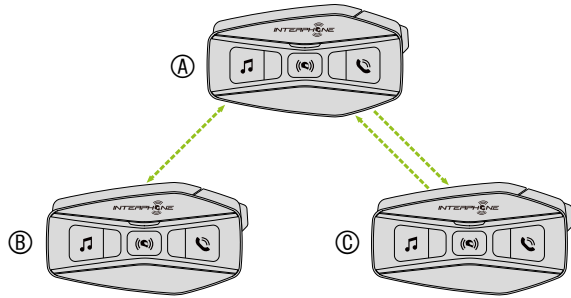
User (A) can create a three-way intercom conference with two other units (B and C) by establishing two intercom connections at the same time.



1. Pair the intercom (A) with other two (B and C).
2. Start an intercom conversation with one of the two units in the intercom group. For example (A) can initiate an intercom conversation with (B). Alternatively (B) can initiate an intercom call with (A).



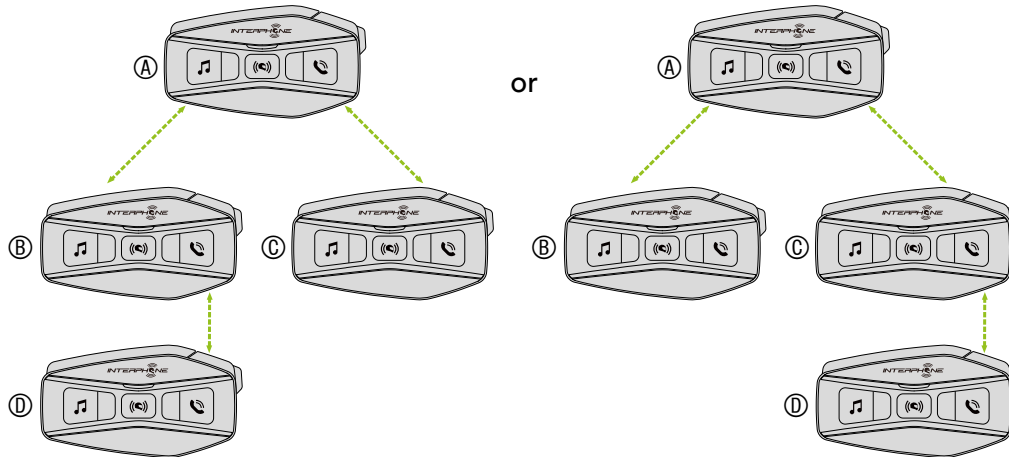
3. Then (A) can call (C), or (C) can join the conversation by making an intercom call to (A).



4. Now user (A) and two friends (B and C) will have a three-way intercom conference.

8.3.2 Starting a four-way intercom conference

Pair the first three units A, B, C as indicated in chap. 8.3.1. Pair D to B or to C. The new participant D can join the other three previously connected friends, creating a four-way conference, making an intercom call to B or C.



8.3.3 Stop Multi-user Intercom

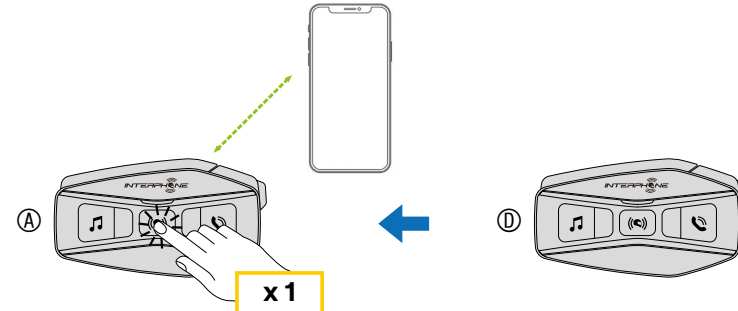
To stop all intercom connections, press and hold the center button for 3 seconds until the beep.

8.4 Three-Way Conference Phone Call with Intercom Users

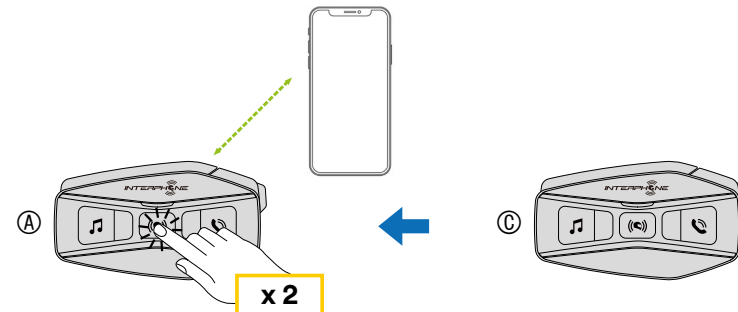
You can have a three-way Conference-Phone Call by adding an intercom user to the mobile phone conversation.

During a mobile phone call, tap the center button once, twice or three times, to invite one of the intercom units (previously paired) to the conversation.

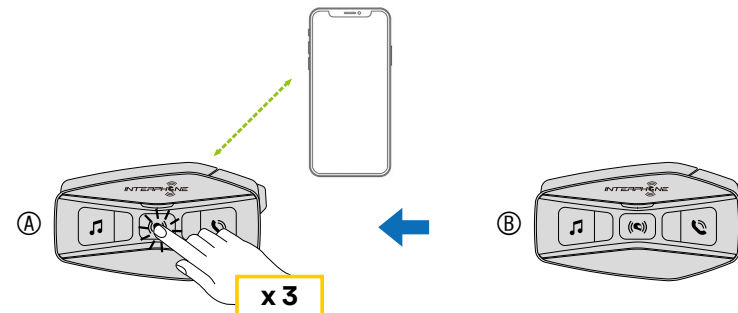
Press once to add unit D to the conference.



Press twice to add unit C to the conference.



Press three times to add unit B to the conference.



Repeat the same command to disconnect intercom unit from the phonecall conference.

To disconnect the mobile phone call during a conference phone call, press and hold the Center Button for 2 seconds.

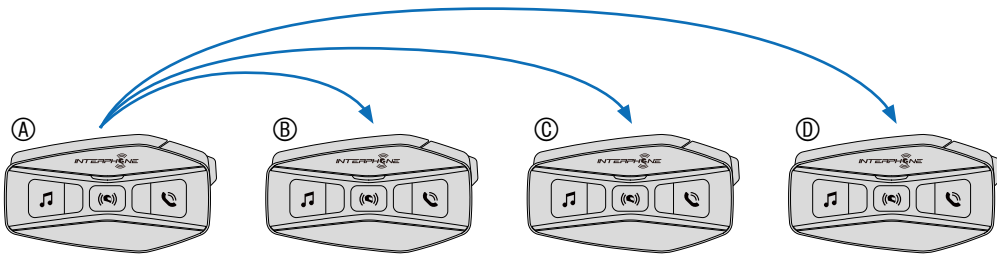
Note: When you have an incoming intercom call during a mobile phone call, you will hear high tone double beeps.

8.5 Group Intercom

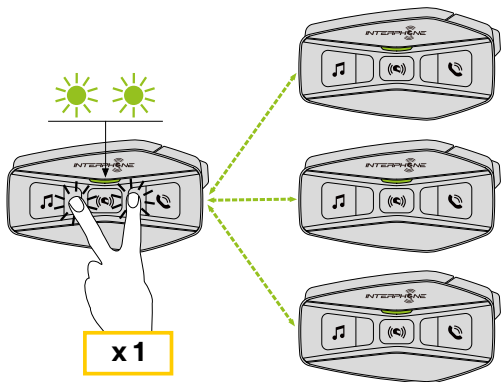
Group Intercom is a command that allows you to instantly start a Multi-Way Conference Intercom with three of the most recently paired headsets.

The first unit is the one which will activate the connection of all the members of the group.

Connection will be established with same logic of normal 4 way conference.



1. Go through intercom pairing with up to three headsets you want to have Group Intercom with.
2. Tap the MUSIC Button and PHONE Button together to begin Group Intercom. The LED will flash green and you will hear a voice prompt, "Group intercom".



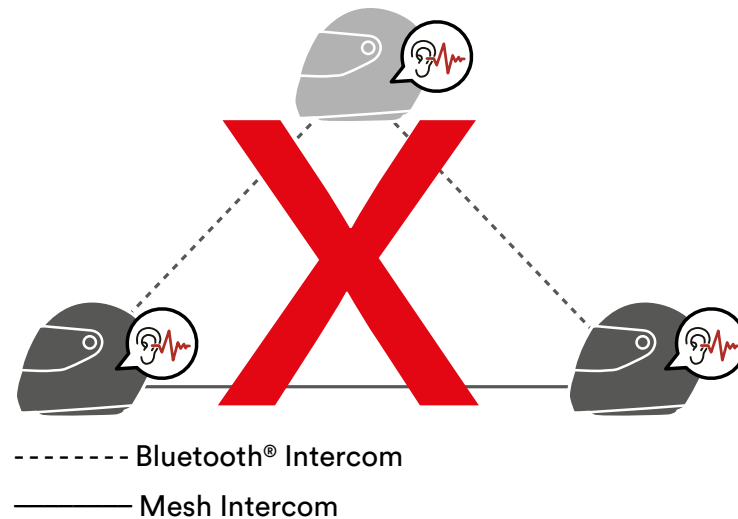
3. When all of the headsets are connected together, everyone will hear a voice prompt, "Group intercom connected".
4. To stop Group Intercom, press and hold the Center Button for 5 seconds during Group Intercom. You will hear a voice prompt, "Group intercom terminated".

8.6 Mesh Intercom Conference with Bluetooth® Intercom Participant

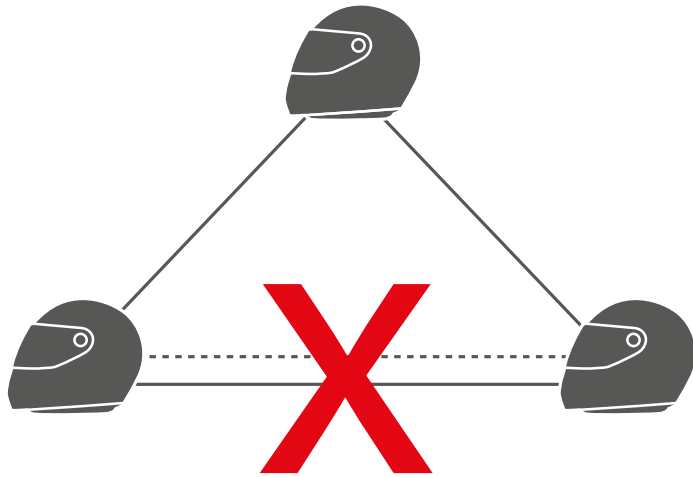
Users can use the existing Bluetooth® intercom and Mesh Intercom function at the same time. In this case, it is recommended to communicate with other U-COM 2 or U-COM 4 headsets (or Sena Bluetooth® only devices) via Bluetooth® intercom connection and use Mesh Intercom between U-COM 16 devices (or Sena mesh headsets). An user who is in Open Mesh or Group Mesh when using Mesh Intercom is able to include up to 3 of their Bluetooth® intercom friends. You can start a two-way Intercom conversation with one of your three Intercom Friends to include them in the Mesh.

Note:

- The audio quality will be reduced if a U-COM 16 connects to 2 or more Bluetooth® intercom friends while in Open Mesh or Group Mesh when using Mesh Intercom.
- If a closed loop is created, as shown below, each user will experience severe noise issues. We recommend to avoid this kind of closed loop.



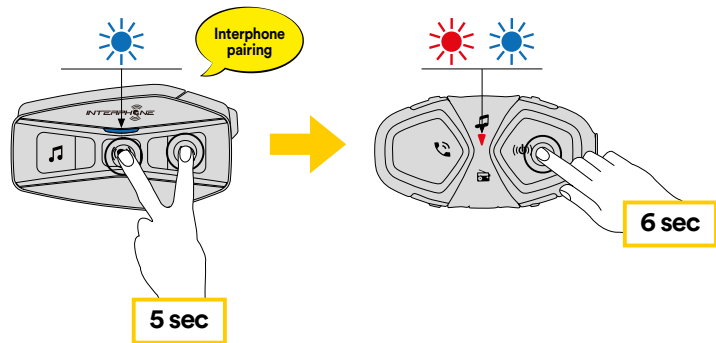
- If Bluetooth® intercom is accidentally activated during Mesh Intercom communication between U-COM 16 headsets, as shown below, you will hear a voice prompt, “Mesh intercom disabled, Bluetooth® intercom connected” every 1 minute. If you turn off the Bluetooth® Intercom or turn off the Mesh Intercom, the voice prompt will no longer come out.



----- Bluetooth® Intercom
 ————— Mesh Intercom

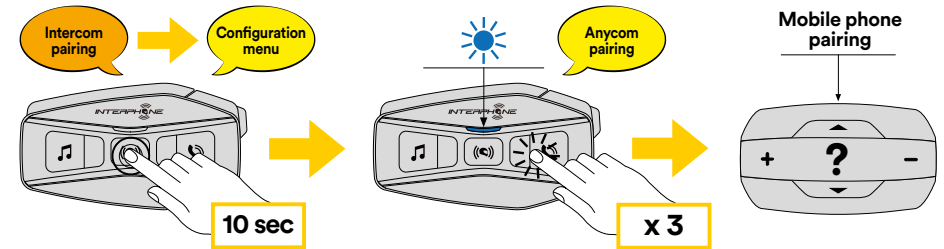
8.7 Old Interphone Series

It is possible to pair previous Interphone series devices by pressing, with the unit on, the INTERCOM and TELEPHONE buttons for 5 seconds. Then start pairing mode on the second unit, usually pressing the power button (with the control unit off) until the led flashes red/blue.



8.8 Anycom

Anycom feature allows intercom conversations with other intercom brands. It is possible to pair the intercom with only one non-Interphone device at a time. The intercom distance depends on the performance of the connected Bluetooth® intercom. When a not-Interphone device is paired with the Interphone device, if another Bluetooth® device is paired via the second mobile phone pairing, it will be disconnected.



1. With U-COM 16 on, enter the configuration menu by pressing the central button for 10 seconds. Do not to release the button before the led turns blue.
2. Press the PHONE button 3 times to activate the ANYCOM pairing mode.
3. Set the not-Interphone intercom to mode Phone pairing.

8.9 Mesh Intercom with Anycom

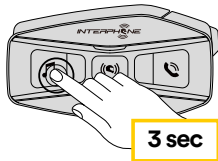
Users can use the existing Two-way Anycom Intercom and Mesh Intercom function at the same time. In this case, it is recommended to communicate with non-Interphone headset via Two-way Anycom connection and use Mesh Intercom between U-COM 16 headsets.

A user who is in Open Mesh or Group Mesh when using Mesh Intercom is able to include one Anycom Intercom. You can start a Two-way Anycom conversation with your Anycom Intercom to include it in the Mesh.

9. FM RADIO

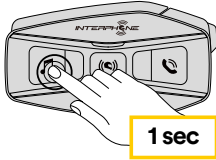
9.1 FM Radio features

Press MUSIC button for 3 seconds to switch ON/OFF the FM RADIO.

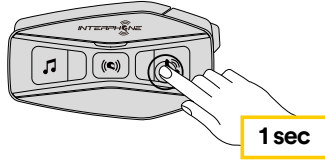


1. To start searching for radio stations, press the music key or the phone key for one second.

Next station

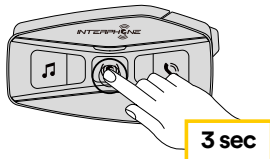


Previous station

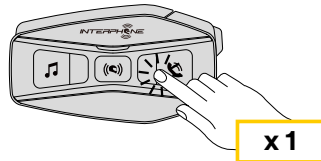
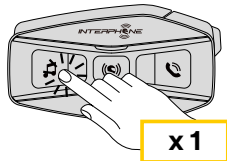


9.2. Radio Stations memory

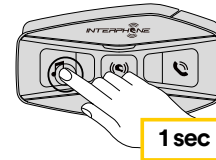
Tune on station you want to save into memories. Press for three seconds the central button to start saving procedure.



Navigate through the preset numbers that you want to store.



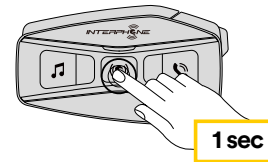
Press MUSIC button for one second to save station.



Any existing station will be overwritten.

Up to 10 stations can be stored on U-COM 16. You can navigate through the saved stations by pressing the central button for one second, advancing one memory at a time.

1 -> 2 -> 3 -> 4 -> 5 -> 6 -> 7 -> 8 -> 9 -> 10 -> 1 -> 2 -> 3 -> ...



9.3 Region Selection

You can select the proper FM frequency range for your location from the Device Manager (available for PC and MAC on www.interphone.com) or the INTERPHONE UNITE App. Using the region setting, you can optimize the seek function to avoid unnecessary frequency ranges.

SETTINGS:

Worldwide 76.0 ~ 108.0MHz ± 100kHz

North America, South America and Australia 87.5 ~ 107.9MHz ± 200kHz

Asia and Europe 87.5 ~ 108.0MHz ± 100kHz

Japan 76.0 ~ 95.0MHz ± 100kHz

9.4 Storing temporary stations (with "Advanced Features" activated by APP or Device Manager)

The TEMPORARY STORE feature automatically searches and saves the 10 nearest radio stations, without changing the preset stations existing.

To activate the function, press the MUSIC button 3 times quickly. The temporary preset stations are canceled when the intercom is restarted.

10. VOICE COMMANDS

The voice command of the intercom allows you to perform certain operations using only the voice. You can control the intercom completely hands-free using the recognition vocal. You can set another language on the UNITE Interphone app. If you set a language that does not support voice commands, voice commands will only work in English. It's possible see the list of voice commands of another language from the Interphone UNITE app.

Voice command performance may vary depending on environmental conditions, such as the speed of riding, the type of helmet and environmental noises.

To improve performance, minimize wind noise on the microphone using a foam microphone cover and closing the helmet visor. It is recommended to keep a normal tone of voice even in conditions of strong ambient noise, the command recognition has lower performance if commands come say screaming loud, if the microphone is too close or too far from the mouth.

Voice command list

Action	Command
Start Mesh intercom	Hey Interphone, Mesh On
Stop Mesh intercom	Hey Interphone, Mesh Off
Set Open Mesh mode	Hey Interphone, Open Mesh
Set private Mesh mode	Hey Interphone, Group Mesh
Group creation for private Mesh	Hey Interphone, Mesh Grouping

Action	Command
Bluetooth® intercom pairing	Hey Interphone, Pairing Intercom
Connect intercom one	Hey Interphone, Intercom one
Connect intercom two	Hey Interphone, Intercom two
Connect intercom three	Hey Interphone, Intercom three
Stop intercom	Hey Interphone, end Intercom

Action	Command
Phone pairing	Hey Interphone, phone pairing
Answer a phone call	Hello
Reject a phone call	Ignore
Start Google assistant	Hey Google
Start Siri	Hey Siri

Action	Command
Music play via Bluetooth®	Hey Interphone, play music
Music stop	Hey Interphone, stop music
Start FM radio	Hey Interphone, FM radio on
Stop FM Radio	Hey Interphone, FM radio off
Track/Station next	Hey Interphone, next
Track/Station previous	Hey Interphone, previous
Check battery level	Hey Interphone, check battery
Increase listening volume	Hey Interphone, volume up
Decrease listening volume	Hey Interphone, volume down

11. FUNCTION PRIORITY AND FIRMWARE UPGRADES

11.1 Function Priority

The headset prioritizes connected devices in the following order:

1. (Highest) Mobile phone
2. Voice command mode
3. Mesh Intercom/ Bluetooth® Intercom
4. Music sharing via Bluetooth® stereo
5. FM radio
6. Bluetooth® stereo music

A lower-priority function gets interrupted by a higher-priority function. For example, stereo music will be interrupted by an Intercom Conversation; an Intercom Conversation will be interrupted by an incoming mobile phone call.

11.2 Firmware Upgrades

The headset supports firmware upgrades. Using the Device Manager utility (available for PC and MAC on www.interphone.com) you can upgrade firmware.

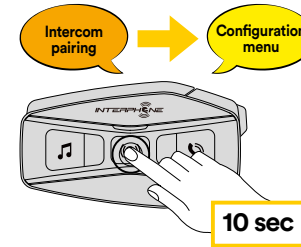
The USB Power & Data Cable (USB-C) must be connected to your computer, then start Device Manager on computer and follow instructions step by step.

Interphone Unite APP can check the firmware version present on the headset and inform you in case of a newer available firmware, but APP can't flash the new firmware to headset.

12. CONFIGURATION SETTING

12.1 Headset Configuration Setting

With U-COM 16 on, press and hold central button for 10 seconds, to enter settings menu. Don't release the button until the led light is blue.



To navigate through the settings, press once the MUSIC button or the PHONE button.

1. Phone pairing
2. Second Mobile Phone Pairing
3. Phone selective pairing (pair a device with HFP profile only)
4. Media selective pairing (pair a device with the A2DP profile only)
5. GPS pairing

To confirm the following configuration menu options, press the CENTER button once.

6. Delete all pairings
7. Anycom pairing
8. Factory reset
9. Exit

12.1.1 Delete all pairings

Delete all Bluetooth® pairings stored in the device.

12.2 Device settings

You can change the device settings from the Device Manager utility (available for PC and MAC on www.interphone.com) or from the Interphone UNITE app.

Attention: the setting "Advanced Features" will enable the following headset features:

- The private MESH mode called "GROUP MESH"
- Reset Mesh
- Phone multiple speed dial
- Conference intercom + phonecall
- Smart FM station seek

12.2.1 Speed dial

Assign phone numbers for speed dialing to make a phone call quickly.

12.2.2 Channel Setting (Default: channel 1)

If the Open Mesh communication experiences interference because other groups are also using the channel 1 (default), change the channel. You can select one of 1 to 9 channels.

12.2.3 Unit Language

You can select the device language. The selected language is maintained even when the headset is rebooted

12.2.4 Audio Equalizer (Default: Off)

You can use the Audio Equalizer to increase/decrease the decibel level of different frequency ranges of audio.

- Balance will adjust all of the frequency ranges to be the same volume level (0 dB).
- Bass Boost will increase the bass range of audio (20 Hz - 250 Hz).
- Mid Boost will increase the mid range of audio (250 Hz - 4 kHz).
- Treble Boost will increase the high range of audio (4 kHz - 20 kHz).

12.2.5 VOX Phone (Default: Enable)

If this feature is enabled, you can answer incoming calls by voice. When you hear a ringtone for an incoming call, you can answer the phone by saying a word such as "Hello" loudly or by blowing air into the microphone. VOX phone is temporarily disabled if you are connected to intercom. If this feature is disabled, you have to tap the Center Button to answer an incoming call.

12.2.6 VOX Intercom (Default: Disable)

If VOX Intercom is enabled, you can initiate an intercom conversation with the last connected intercom by voice. When you want to start intercom, say a word such as "Hello" loudly or blow air into the microphone. If you start an intercom conversation by voice, the intercom terminates automatically when you and your intercom friend remain silent for 20 seconds. However, if you manually start an intercom conversation by tapping the Center Button, you have to terminate the intercom conversation manually. However, if you start the intercom by voice and end it manually by tapping the Center Button, you will not be able to start intercom by voice temporarily. In this case, you have to tap the Center Button to restart the intercom. This is to prevent repeated unintentional intercom connections by strong wind noise. After rebooting the headset, you can start the intercom by voice again.

12.2.7 VOX Sensitivity (Default: 3)

VOX sensitivity can be adjusted depending on your riding environment. Level 5 is the highest sensitivity setting and level 1 is the lowest.

12.2.8 Bluetooth® Intercom Audio Multitasking (Default: Disabled)

Audio Multitasking (Bluetooth® Intercom Audio Multitasking and Mesh Intercom Audio Multitasking) allows you to have an intercom conversation while simultaneously listening to music, FM radio, or GPS instructions. The overlaid audio is played in the background with reduced volume whenever there is an intercom conversation and will return to normal volume once the conversation is finished.

The Mesh Intercom Audio Multitasking feature is always on.

Note:

- For Bluetooth® Intercom Audio Multitasking to work properly, you need to power the headset off and on. Please restart the headset.
- Bluetooth® Intercom Audio Multitasking will be activated during two-way intercom conversations with a headset that also supports this feature.
- Some GPS devices may not support this feature.
- The Audio Multitasking feature can be configured through the Intercom-Audio Overlay Sensitivity and the Audio Overlay Volume Management settings.

12.2.9 Intercom-Audio Overlay Sensitivity (Default: 3)

The music, FM radio and GPS volume will be lowered to play in the background if you talk over the intercom while the overlaid audio is playing. You can adjust the intercom sensitivity to activate this background audio mode. Level 1 has the lowest sensitivity and level 5 has the highest sensitivity.

Note: If your voice is not louder than the sensitivity of the selected level, the overlaid audio will not be lowered.

12.2.10 Audio Overlay Volume Management (Default: Disable)

The music, FM radio and GPS overlaid audio reduces in volume whenever there is an ongoing intercom conversation. If Audio Overlay Volume Management is enabled, the volume level of the overlaid audio will not be reduced during an intercom conversation.

12.2.11 HD Intercom (Default: Enable)

HD Intercom enhances the two-way intercom audio from normal quality to HD quality. HD Intercom will become temporarily disabled when you enter into a multi-way intercom. If this feature is disabled, the two-way intercom audio will change to normal quality.

Note:

- The intercom distance of HD Intercom is relatively shorter than normal intercom.
- HD Intercom will become disabled temporarily when Bluetooth® Intercom Audio Multitasking is enabled.

12.2.12 HD Voice (Default: Enable)

HD Voice allows you to communicate in high-definition during phone calls. This feature increases the quality so that the audio will be crisp and clear during phone call conversations.

Three-Way Conference Phone Call with Intercom Participant will not be available if HD Voice is enabled.

Note:

- Refer to the manufacturer of your Bluetooth® device that will be connected to the headset to see if it supports HD Voice.
- HD Voice is active only when Bluetooth® Intercom Audio Multitasking is disabled.

12.2.13 Smart Volume Control (Default: Disable)

Enabling Smart Volume Control automatically changes the level of the speakers volume based on the level of the environment noise. You can enable it by setting the sensitivity to low, medium or high.

12.2.14 Sidetone (Default: Disable)

Sidetone is audible feedback of your own voice. It helps you to naturally speak at the correct level according to varying helmet noise conditions. If this feature is enabled, you can hear what you are speaking during an intercom conversation or a phone call.

12.2.15 Voice Prompt (Default: Enable)

You can disable voice prompts by software configuration settings, but the following voice prompts are always on.

- Headset configuration settings menu, battery level indicator, speed dial, FM radio functions.

12.2.16 RDS AF Setting (Default: Disable)

Radio Data System (RDS) Alternative Frequency (AF) Setting allows a receiver to re-tune to the second frequency location when the first signal becomes too weak. With RDS AF enabled on the receiver, a radio station with more than one frequency can be used.

12.2.17 FM Station Guide (Default: Enable)

When FM Station Guide is enabled, FM station frequencies are given by voice prompts as you select preset stations. When FM Station Guide is disabled, the voice prompts on FM station frequencies will not be given as you select preset stations.

12.2.18 Advanced Noise Control™ (Default: Enable)

When Advanced Noise Control is enabled, the background noise is reduced during an intercom conversation. When it is disabled, the background noise is mixed with your voice during intercom.

13. TROUBLESHOOTING

Please visit www.interphone.com for video tutorials and answers to frequently asked questions.

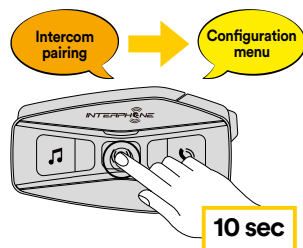
13.1 Fault reset

When the intercom does not work properly, it is possible to reset the unit easily, simply by disconnecting the battery for few seconds.

Note: Reset after error will not restore the intercom to factory settings.

13.2 Factory reset

To erase all of your settings and start fresh, the headset can be restored to factory default settings using the Factory Reset feature.



With U-COM 16 on, enter the configuration menu by pressing the power key for 10 seconds. Be careful not to release the button before the LED turns blue, you will hear the message confirming activation of the configuration menu.

Press the PHONE button twice until you hear the message "Factory reset", press once the CENTRAL button to confirm. A voice announcement will be issued to confirm: "Reset headphones, goodbye".